

Winter 2011

CDR News

Don't Drown in Data, Embrace It



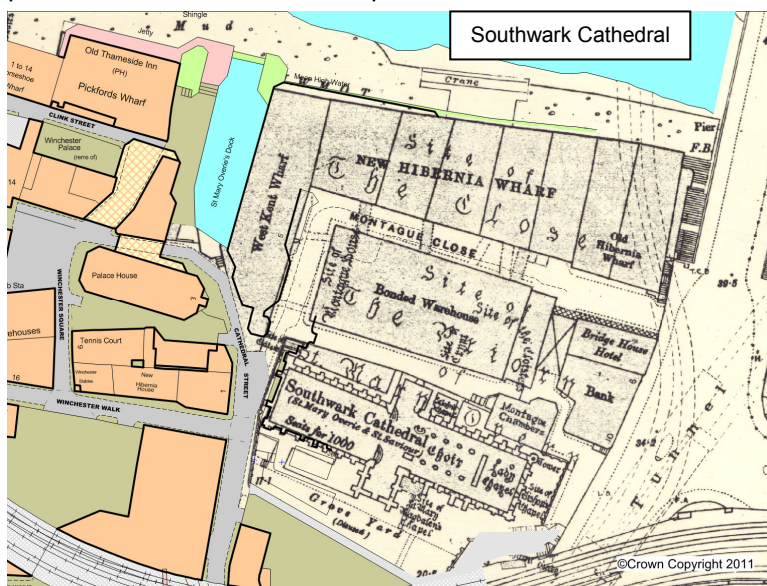
The age of big data is upon us - and it is here to stay. Large organisations all over the world are in a massive data-gathering exercise. Huge numbers are constantly thrown at us and they seem to rise and rise every month. We are told there are 180 million Tweets per day, 500 million Facebook users and 247 billion emails every day. Who counts the figures? And can we believe them? After all, the world population has just reached 7 billion and yet, less than 2 billion actually have access to the internet.

The internet enables us to find data and information from many sources. You no longer need to purchase the hardware to store all this data either - you can use the services of hosts to “the Cloud”. Cloud computing is a marketing term for technologies that provide computation, software, data access, and storage services that do not require end-user knowledge of the physical location and configuration of the system that delivers the services. This may take the form of web-based tools or applications that users can access and use through a web browser as if the programs were installed locally on their own computers.

So how do we find our way through this plethora of data? Whilst some have been forced to begin the recording of metadata through the INSPIRE directive, others have embraced this as a really good means of managing and cataloguing the ever-growing collections of data. The release and integration of MapInfo Manager with MapInfo Professional has enabled desktop users to find and use geographic data and be confident that it is the correct and current version – as designated by the data manager, of course.

Bringing History to Life in Southwark

As part of their wide range of GIS services to clients, CDR Group has been making historic maps and drawings accessible for more than ten years. Their skills were recently called upon by the London Borough of Southwark. The GIS Manager at Southwark, Stuart Carter, had discovered an old archive of maps. Recognising the quality and potential interest of these maps Stuart realised that it was a shame if they were to remain hidden away. Stuart



therefore engaged CDR Group to make this historic record of the Borough available both internally to the Borough and externally to the wider public via the internet.

The 82 maps Stuart had uncovered were Ordnance Survey maps from 1894 and 1922 but later amended by the London County Council between 1936 and 1952. The maps covered the whole of the Borough of Southwark and were each about A0 in size and were at a scale of 88 feet to the inch (or 1:1,056 for you younger people!).

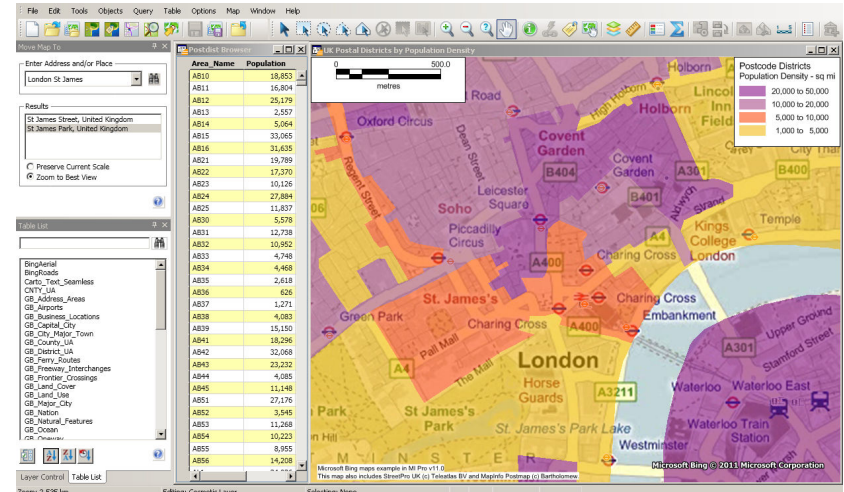
CDR's task involved firstly scanning each of the maps using our large-format scanning equipment. Each of the image was then cropped along what is known as the “neat line”. The cropped images were further manipulated to produce a true rectilinear image with the top edge of the map being horizontal. The fourth stage is to generate geo-referencing data for each image so that they

can be loaded into a GIS such as MapInfo Professional. This was successfully completed and the public can view the finished data on Southwark's website under the “Maps” tab, along with the modern day mapping and imagery.

MapInfo Professional version 11.0

This summer's release of MapInfo Professional v11.0 provides organisations with new and powerful methods for sharing maps across the enterprise. With MapInfo Professional v11, organisations can more fully interact with the cloud, including capabilities to publish maps to and access data from the cloud.

MapInfo now offers a Premium Service with Bing Maps and Bing Search capabilities. The new browser window offers advanced data entry options and adopts the latest industry practices for easy and effective data entry. Direct integration with MapInfo Manager enables efficient searching, accessing and management of spatial data throughout an organisation.



Version 11.0 now supports greater memory intensive operations through enhanced support of 64-bit Windows operating environment.



Ordnance Survey Licensing Extended

Since CDR Group moved over to being a fully Licensed Partner to Ordnance Survey in 2009, more products have been made available to the Channel for resale. Last year OS MasterMap – the large scale detailed digital data was opened up to us for resale and now the new AddressBase and Aerial imagery data is available. A number of our clients have already taken advantage of this offering for particular sites and estates where you can choose precisely your area of interest with a buffer around it.

In addition, CDR has also teamed-up with another publisher of printed products to offer site-centred laminated maps at 4 scales of popular OS paper maps. The Aqua3™ lamination is waterproof, tearproof, lightweight and can still be folded without cracking.

Training & Support

Our MapInfo Training courses and monthly Open Days remain popular as ever. As we look to keep up-to-date and share our expertise with our users, we have also run 2 workshops recently on developing applications with Open Source software.

Whatever the task with MapInfo, our team are ready and eager to assist you. Sometimes that involves spending a day or two with you at your place of work, where we can help work through specific tasks that you need to complete. We are here to help....

Meet Samantha and Bob

Bob the pheasant is a regular visitor to Eccles House – this photo shows him on our window sill. Meanwhile, you may meet Samantha at the Mapping Showcase 2011 event on 1st December at The Emirates Stadium in London! Check our website for more news and information.



Bob and Samantha get in on the act

Eccles House, Eccles Lane,
Hope, Hope Valley, S33 6RW

Phone: 01433 621282

Email: sales@cdrgroup.co.uk

Website: www.cdrgroup.co.uk



Mapping the way forward

